

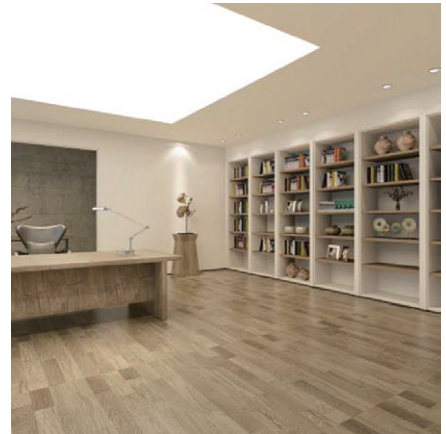


Designer Lighting
LED series

FLEX TILE LIGHTING

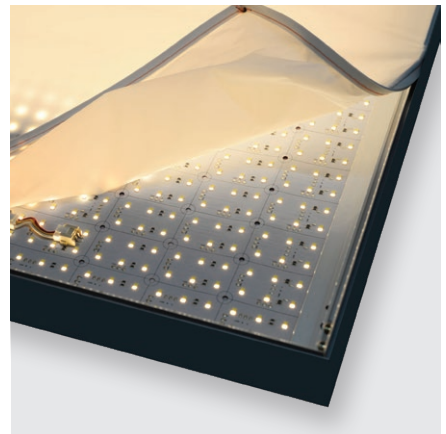
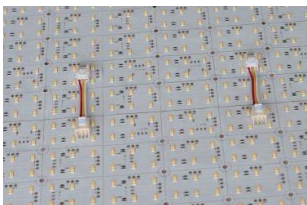
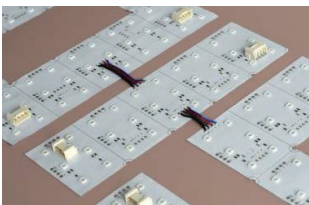


DL Flexible sheets are bendable allowing installation on curved surfaces, and sections are easily cut and rejoined to create or fit into unique and interesting designs. It is designed to be used behind semi-transparent materials such as fabric or plastic which diffuse the light, ensuring even light distribution without dotting.

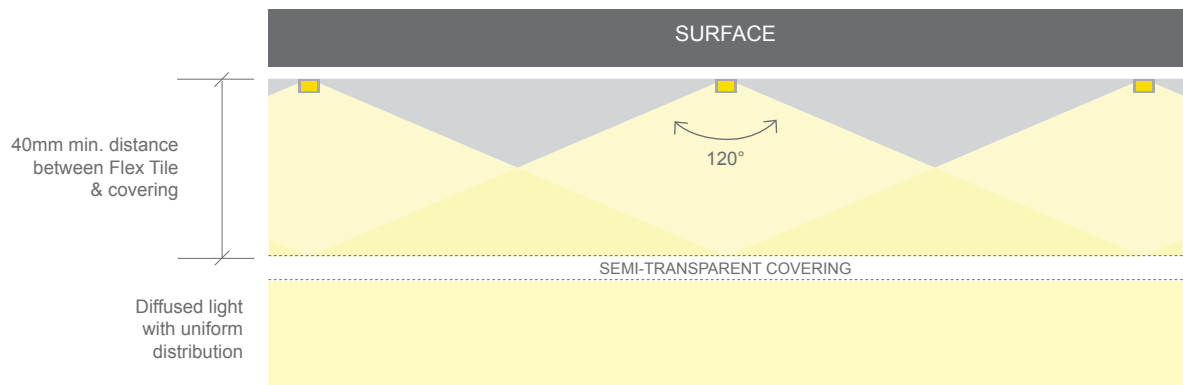


Available in warm white, natural white, tuneable white, and RGB. Flex Tile is dimmable, allowing colour and brightness control for a vibrant illumination or a soft glow, giving you the flexibility to create a customised and personalised space.

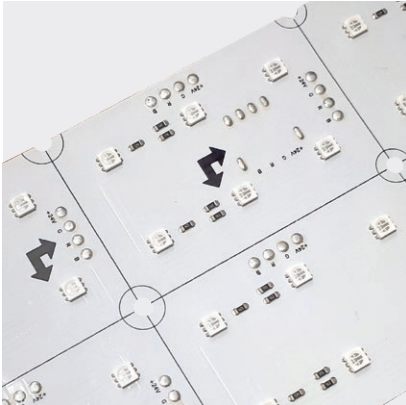
Flex Tile provides great coverage and works beautifully for light boxes used in signage.



DIFFUSE LIGHTING WITHOUT DOTTING



FLEX TILE



SHOWING RGB



APPLICATION

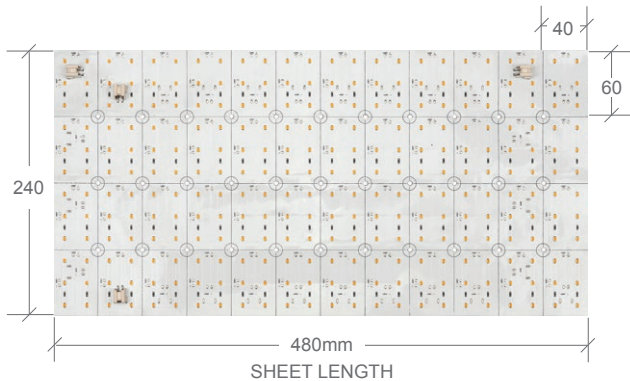
Ideal for ceiling lighting features or light boxes (min depth 40mm).

COLOUR	CODE	WATTAGE / SHEET	LED QUANTITY / SHEET	LUMENS / SHEET	EFFICACY / SHEET	CUTTABLE SECTIONS / SHEET
WARM WHITE 3000K	DL-SS-2000-3K	10W	288	978lm	98lm	4 × 12
NATURAL WHITE 4000K	DL-SS-2000-4K			1046lm	105lm	
TUNEABLE WHITE 2700–6000K	DL-SS-2000-TW	15W	576	1456lm	97lm	4 × 12
RGB	DL-SS-2000-RGB	18W	162	665lm	37lm	3 × 9

COLOUR VARIANCE +/- 200K
ELECTRICAL & OPTICAL DATA VARIANCE +/- 10%
SOLD PER SHEET

INPUT VOLTS	24V DC constant voltage	CRI	≥80 <i>(Warm white and Natural white only)</i>	LED PITCH	3K / 4K / TW 20mm RGB 26.6mm
OPERATING TEMP.	-25°C ~ +45°C	BEAM ANGLE	120°	DIMENSIONS	W240 × L480mm sheet <i>Sheets are made up by cuttable sections</i>
MAX. SHEETS PER CIRCUIT	10	SOURCE LIFE	35,000 hours	MOUNTING	3M adhesive backing and provision for screw mounting
		WARRANTY	5 years	INGRESS PROTECTION	Indoor use only
				CONTROL	Dimmable by PWM signal

WARM WHITE, NATURAL WHITE, TUNEABLE WHITE



RGB

