

The Angle Andy 25 profile is perfect for mounting in corners of joinery, corners of perpendicular walls or into the corner of a wall and ceiling. Angle Andy 25 features one smooth side, meaning it is not confined to corner mounting, but can also be mounted with one side of the extrusion visible - ideal for wall washing or glass cabinetry.

MOUNTING OPTIONS		DIFFUSER OPTIONS		SUPER SERIES LED STRIP OPTIONS			SUPER SERIES LED STRIP OPTIONS		
Surface mounted	Opal	Lumens per metre	Watts per metre	Colour temp.	Lumens per metre	Watts per metre	Colour temp.		
Rod suspended	Clear	270lm		2700K	2000lm		2700K		
		280lm	2.6W	3000K	2000lm	17W	3000K		
		300lm		4000K	2130lm		4000K		
		470lm		2700K	2190lm		2700K		
		600lm	5W	3000K	2340lm	20.3W	3000K		
		640lm		4000K	2460lm		4000K		
		1250lm		2700K					
		1270lm	11W	3000K					
		1400lm		4000K					

- LED strip options vary depending on region – please consult your local distributor for more information. Other LED strip options are available on request, including IP65 and RGBW colour change.
 - All lumen values refer to the bare LED strip. Losses through diffuser/profile are not represented. Consult photometric data.
 - 5 year manufacturer's warranty on Super Series LED strip.

ACCESSORIES



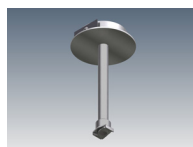
JMC-12
Joinery mounting clip



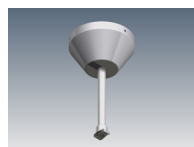
JN-ST-12
Straight joiner



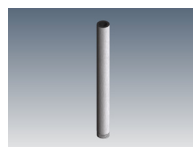
JN-90-12
90 degree joiner



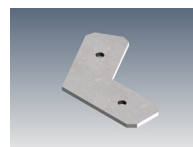
SRK-1-S / SRK-1-W
Rod suspension kit (rod not incl)



SRK-6-S / SRK-6-W
Rod suspension kit (rod not incl)



ROD-0.5M / ROD-1M / ROD-2M
Suspension rod - 0.5m, 1m, 2m



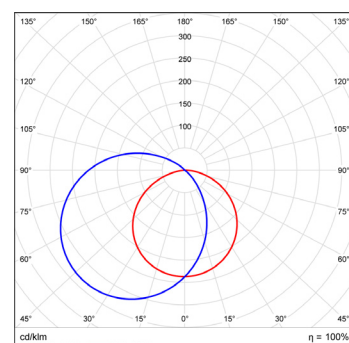
JN-120-12
120 degree joiner



JN-135-12
135 degree joiner

ADDITIONAL INFORMATION

Applications	Task lighting in kitchen cabinetry, lighting for shelving or display units, hallway lighting, wall-washing.
Installation	Interior or exterior (with IP65 rated LED strip).
Materials	Extruded aluminium body, polycarbonate diffuser, AES plastic end caps.
Finish	Natural silver anodised or custom powder coat.
Light source	LED ribbon strip.
Power supply	24V DC - remote driver options ranging from 6W up to 320W.
Dimmable	Various options available, please enquire.



Polar curve for 1890 lumen LED strip with opal diffuser.

