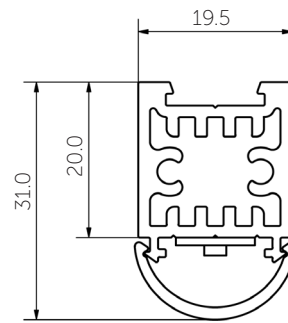
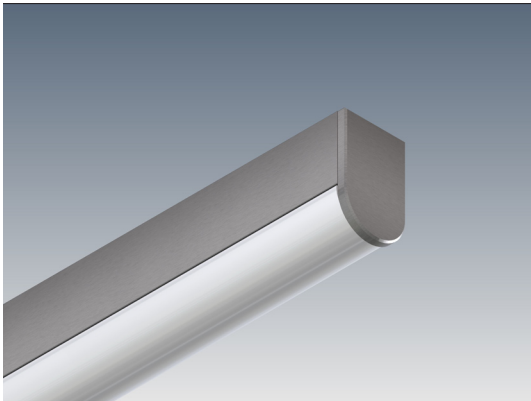


# Sideways Sally 20C

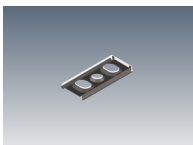


The Sideways Sally 20C extrusion is a compact uplight/downlight solution providing powerful LED lighting. A versatile system suitable for various mounting options, Sideways Sally 20C can be surface mounted, wall mounted and suspended. The concealed mounting clip provides a quick and secure fixing to joinery. Both wire and rod suspension options are available for the Sideways Sally 20C extrusion.

MOUNTING OPTIONS	DIFFUSER OPTIONS	SUPER SERIES LED STRIP OPTIONS		
Surface mounted	Satin	Lumens per metre	Watts per metre	Colour temp.
Rod suspended		270lm		2700K
Wire suspended		280lm	2.6W	3000K
Wall mounted		300lm		4000K
		470lm		2700K
		600lm	5W	3000K
		640lm		4000K
		1250lm		2700K
		1270lm	11W	3000K
		1400lm		4000K

- LED strip options vary depending on region – please consult your local distributor for more information. Other LED strip options are available on request, including IP65 and RGBW colour change.  
- All lumen values refer to the bare LED strip. Losses through diffuser/profile are not represented. Consult photometric data.  
- 5 year manufacturer's warranty on Super Series LED strip.

## ACCESSORIES



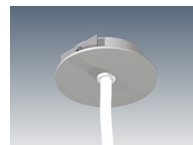
JMC-12  
Joinery mounting clip



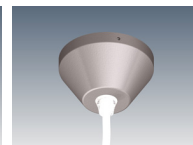
JN-ST-12  
Straight joiner



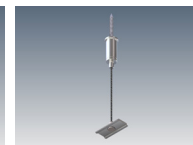
JN-90-12  
90 degree joiner



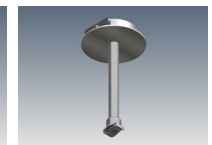
CB-60-R-S / CB-60-R-W  
Cable base 60, recessed



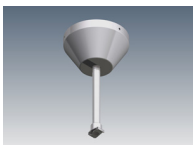
CB-80-SM-S / CB-80-SM-W  
Cable base 80, surface mount



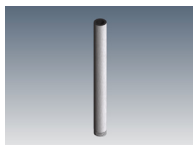
SWK-1-2M / SWK-1-4M  
Wire suspension



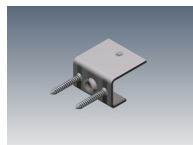
SRK-1-S / SRK-1-W  
Rod suspension kit (rod not incl)



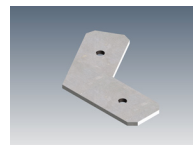
SRK-6-S / SRK-6-W  
Rod suspension kit (rod not incl)



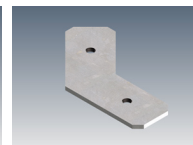
ROD-0.5M / ROD-1M / ROD-2M  
Suspension rod - 0.5m, 1m, 2m



WB-SS20  
Wall bracket



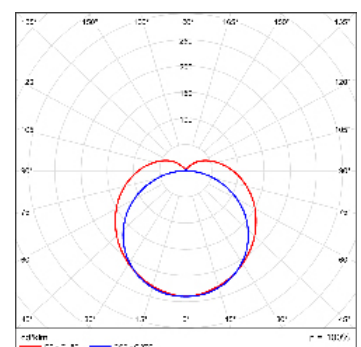
JN-120-12  
120 degree joiner



JN-135-12  
135 degree joiner

## ADDITIONAL INFORMATION

Applications	Task lighting over kitchen islands or reception counters, mirror lighting.
Installation	Interior or exterior (with IP65 rated LED strip).
Materials	Extruded aluminium body, PMMA diffuser, aluminium end caps.
Finish	Natural silver anodised or custom powder coat.
Light source	LED ribbon strip.
Power supply	24V DC - remote driver options ranging from 6W up to 320W.
Dimmable	Various options available, please enquire.



Polar curve for 1890 lumen LED strip with satin diffuser.

